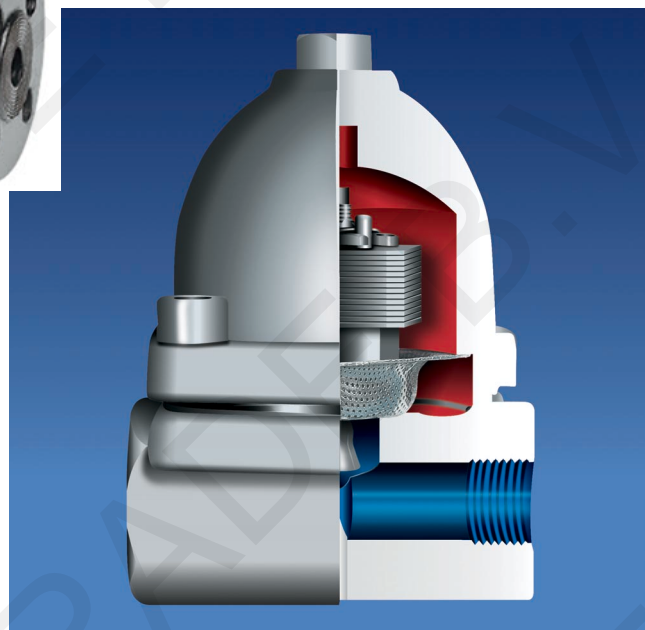


## BI - METAL STEAM TRAP With Adjusting Screw



### Main Features

Thermostatic / thermodynamic steam traps with corrosion resistant regulator, uneffected by waterhammer. Integral strainer and non - return valve action. Automatic deaeration. Installation in any position. Working at high pressure. Bi - metal thermostatic plates can be adjust by adjustment screw. By adjusting it is possible to increase and decrease the discharge capacity and the temperature of condensate. Ideal steam trap for super heated steam line applications.



### Typical Applications

Main Steam Lines  
Drying Units  
Pressing Units  
Steam Jacket Pipelines  
Convactor Heaters  
Heaters

### Installation

The steam trap should be fitted on the line in every position but best application is horizontal installation.

#### OPERATING CONDITIONS

Max. Allowable Pressure PMA (bar)	40
Max. Allowable Temperature TMA (°C)	400
Max. Operating Pressure PMO (bar)	32
Max. Differential Pressure PMD (bar)	22
Max. Operating Temperature TMO (°C)	250

#### WEIGHTS

Connections	Flanged	Screwed	Butt weld
Sizes mm	15 - 20 - 25	1/2 - 3/4 - 1	1/2 - 3/4 - 1
Weights kgs	4.3 - 4.6 - 5.3	2.4 - 2.4 - 2.3	2.5 - 2.5 - 2.4

#### CONNECTIONS

Screwed	NPT acc. to ANSI B1 20 BSP acc. to BS 21
Socket weld	ANSI B 16.11
Flanged	DIN 2635 (PN 40)

#### SIZES

mm	inches
15 - 25	1/2" - 1"

## BI - METAL STEAM TRAP With Adjusting Screw

**Chart 1**

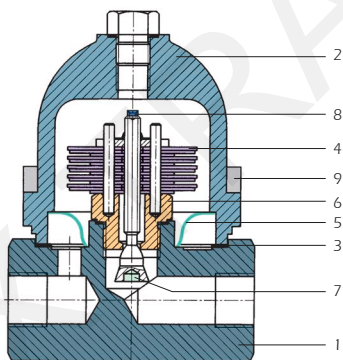
Condensate temp. max. 10°C below steam saturation temp.

**Chart 2**

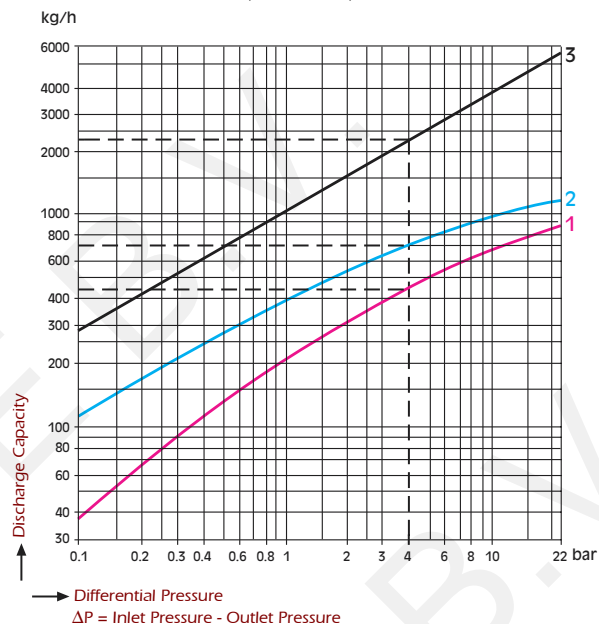
Condensate temp. max. 20°C below steam saturation temp.

**Chart 3**

Cold condensate at a temperature of 30 °C.


**Discharge Capacities**

(1/2" - 1")

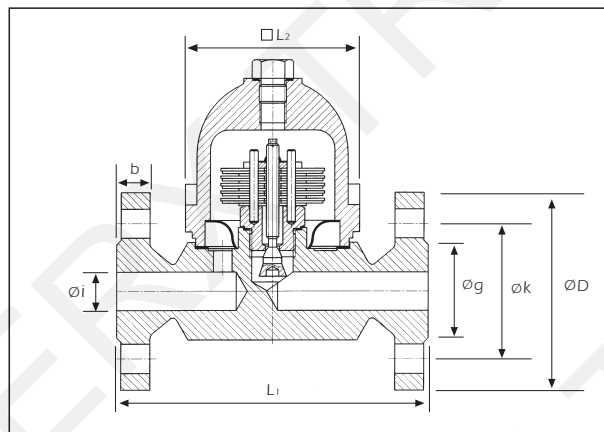
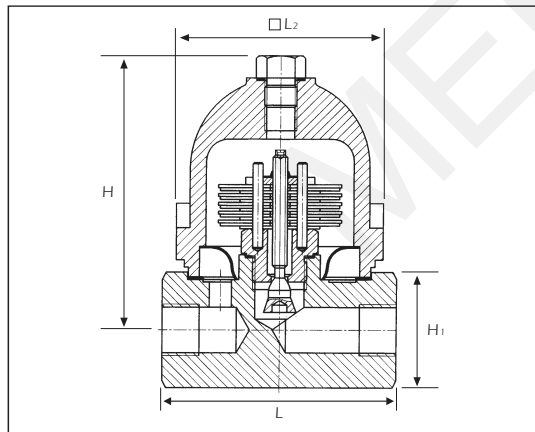


### SPARE PARTS

1	Body	Forged Steel ASTM A1 05
2	Cover	Forged Steel ASTM A1 05
3	Cover Gasket	Klingerit Asbestos Free
4	Bi - Metallic Plates	Stainless Steel
5	Strainer	Stainless Steel
6	Seat	Stainless Steel AISI 304
7	Valve	Stainless Steel AISI 304
8	Adjustment Screw	Stainless Steel AISI 304
9	Cover Bolts	ASTM A1 93 B 16

### DIMENSIONS

Size	L - L1 - L2	H - H1	D	b	k	g	i
15	95 - 150 - 82	102 - 41	95	16	65	45	14
20	95 - 150 - 82	102 - 41	105	18	75	58	14
25	95 - 160 - 82	102 - 41	115	18	85	68	14



Information provided as an indication and subject to possible modification.  
Colours and details can be different then shown in data sheets or pictures.  
Merxtrade BV has no liability for any damages by use off any information,  
displayed on these pages.